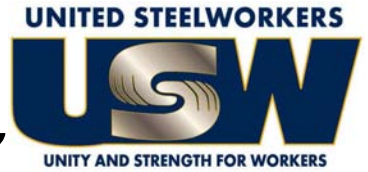




# SafeTalk



## District 3 Health, Safety & Environment Committee



Health, Safety and Environment representatives from around District 3 met recently at the District office in Burnaby to discuss a number of important issues.

Issues discussed were: review of District fatalities and serious injuries, WorkSafe BC policy on workplace status, Manitoba Federation of Labour initiatives, behaviour based safety, CAREX Canada, asbestos issues, new worker awareness education and

upcoming research opportunities. Paul Demers and Amy Hall (left) made a presentation to the committee on CAREX Canada. Paul a professor at the University of British Columbia and Amy an occupational hygienist explained CAREX Canada is developing estimates of the number of Canadians exposed to carcinogens in workplace and community environments. These estimates

will provide significant support for targeting exposure reduction strategies and cancer prevention programs. By bringing together data from across Canada on sources and levels of exposure, they will identify regional differences and vulnerable populations. CAREX Canada will create a significant new resource for policy makers and researchers to prevent cancer.



**CNO HEALTH, SAFETY AND ENVIRONMENT DEPARTMENT HEAD ANDY KING JOINED THE MEETING BY TELE-CONFERENCE. ANDY MADE A PRESENTATION ON THE NEW WORKER AWARENESS PROGRAM**

## Coming Events

Dec 6 National Day of Remembrance on Violence Against Women  
Dec 10 International Human Rights Day

### Health & Safety Training Around The District

It has often been said that training activists is the back bone to a strong labour movement. If that is true the United Steelworkers take a back seat to no one. This past month we saw health and safety activists from Whitehorse to Winnipeg participate in health



**IN WHITEHORSE MEMBERS FROM AEROGUARD AND INLAND KENWORTH DEVELOP A STRATEGIC PLAN THAT THEY WANT TO BRING BACK INTO THEIR WORKPLACES**



**IN WINNIPEG, SOUTHERN MANITOBA AREA COUNCIL PRESIDENT ED HINSBERG AND INSTRUCTOR BRIAN CAMPBELL SPOKE TO THE GROUP ABOUT ORGANIZING**

and safety workshops. The level of interest and expertise of our members cannot be understated. With the ever changing economic landscape issues like stress, shift-work and fatigue are discussed often. Issues participants raised ranged from job loss to inadequate the training of new hires.



**IN KAMLOOPS PARTICIPANTS WORK ON AN ACCIDENT INVESTIGATION. MANY OF THE PARTICIPANTS CAME FROM THE BELEAGUERED FOREST INDUSTRY. LOCAL UNION SAFETY DIRECTOR VICTOR ADRIAN (FOREGROUND SECOND FROM LEFT) HAS BEEN A USW MEMBER FOR OVER 32 YEARS AND IS WORKING HARD TO GET THE IDLED AINSWORTH LUMBER'S LILLOUET VENEER PLANT BACK UP AND RUNNING**

## HAZARD ALERT

**\*NOTE: All THE FOLLOWING WORKERS WERE YOUNG WORKERS AGE 15-24.**

**Injury Type :** Amputated fingertip

**Core Activity :** Lumber mill

A young worker was piling boards in a lumber mill when one glove got caught in a drive pulley.

**Injury Type :** Multiple fractures

**Core Activity :** Cladding installation

A young worker was using cross braces as a ladder while descending the side of an unfinished building. A brace slipped out from underfoot and the worker fell 11 feet.

**Injury Type :** Smoke inhalation

**Core Activity :** Gas bar

A propane-powered recreation vehicle caught fire while refueling. The ignition source was later found to be the pilot light of the propane refrigerator. A young worker who attempted to extinguish the fire sustained smoke inhalation.

**Injury Type :** Lacerated finger

**Core Activity :** Supermarket

A young worker was operating a meat slicer when one finger contacted the moving blade.

**Injury Type :** Crush injuries to hand

**Core Activity :** Drug, vitamin, or pharmaceutical manufacture. As a young worker was performing maintenance on a ribbon blender, one hand was caught in the rotary blade.

**Injury Type :** Soft-tissue injuries to legs

**Core Activity :** Gas bar

A gas bar attendant (young worker) was washing the back window of a customer's van when a second vehicle ran into him. The worker was pinned between the two vehicles.

**Injury Type :** Fractured foot

**Core Activity :** Window cleaning

A young worker was on a ladder, cleaning windows at a private residence, when the ladder slid sideways. The worker fell about 12 feet, landing on an uneven cement walkway.

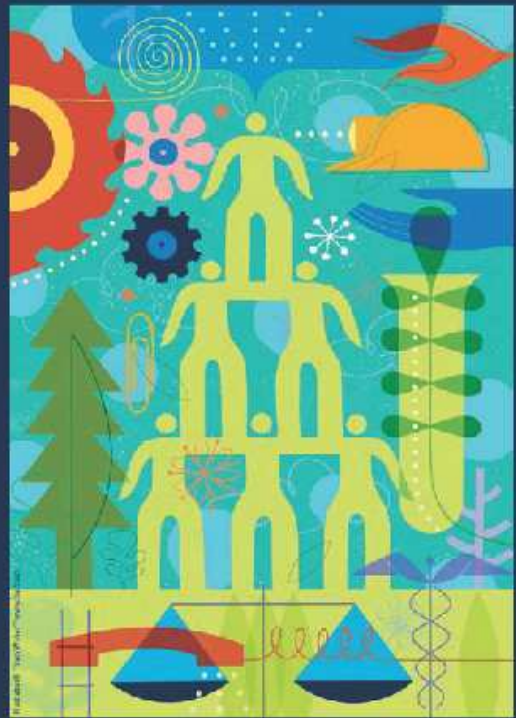
**Injury Type :** Burns

**Core Activity :** Laboratory

A young worker in a lab was transferring 95 percent sulfuric acid from a 4-litre glass bottle into a beaker using a bottletop dispenser. The acid splashed the worker's face.

## Help Spread The Word With The New Worker Awareness Program

Many will tell you, "Just work safe."  
That's not enough.



Let's *make* work safe.  
It's our right!



The New Workers Awareness Program is designed for all new workers, regardless of age. Recent research tells us:

- Age less significant than other factors
- Workers new to the labour market are 3 times more likely to be injured
- Workers new to their jobs, regardless of age, are 4 times more likely to be injured
- Recent immigrants are 2 times more likely to be injured
- New firms have 25% higher injury rate

For more information on the program contact [rcorbeil@usw.ca](mailto:rcorbeil@usw.ca)

### Potash Fatality at Mosaic's Esterhazy Mine

On November 30<sup>th</sup> a collapsing storage bin killed a potash worker and sent another to the hospital. The incident happened at about 2 o'clock in the morning when a raw ore storage bin failed. Mosaic's Esterhazy mine about 125 miles east of Regina, Saskatchewan. The mine is represented by CEP local 892. The worker who died was married and the father of two children. Our sincere condolences go out to the workers family, friends and coworkers.

*Save the date: USW Health, Safety and Environment Conference, Pittsburgh, October 4-8, 2010.*